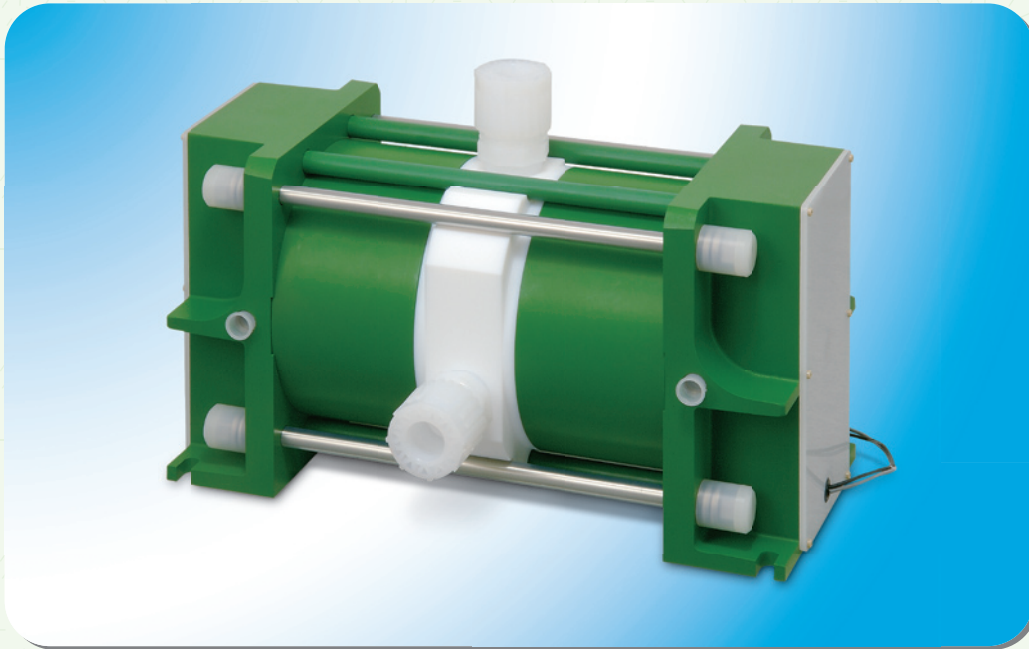


Compact bellows pump with large flow rate (100L/min)



Features

- ① Small footprint and large flow rate (100L/min).
- ② This pump can be used for the high discharge head.
- ③ Low pulsation at suction by the countermeasure for water hammer.

Type	PK-100H			
Pump connections inch(mm)	1-1/4" (φ31.8)			
Pump connectors	SUPER 300 TYPE PILLAR FITTING			
Max discharge capacity L/min	121			
Operating temp. °C	10~40	41~100	101~140	141~180
Supply air pressure MPaG	0.2~0.7	0.2~0.4	0.2~0.3	0.15~0.2
Max discharge pressure MPaG	0.65	0.35	0.25	0.15
Allowable differential pressure of bellows MPa	0.4	0.3	0.2	0.15
Discharge capacity per stroke L/stroke *1	1.27			
Air consumption L/min(Normal)	45~1750			
Temperature in atmosphere °C	10~50			
Effective cross-section area of solenoid valve mm ²	over 75			
Air source connection	2-Rc 1/2"			
Weight kg	53.5			
Pump size mm *2	Max.533.2 ^L × 235 ^B × 292 ^H			

★ Different size of pump connections may vary the above figure.

★ Specify type of end connection when ordering.

★ We have also explosionproof sensor type pumps that are suitable for pumping an explosive organic solution.

★ The length of the suction pipe does not exceed 2m.

★ We have also PC series pumps for CMP slurry, please contact us.

*1) The Value applies when the standard stroke is selected. Be sure to run the pump at a pumping speed of 90spm or lower.

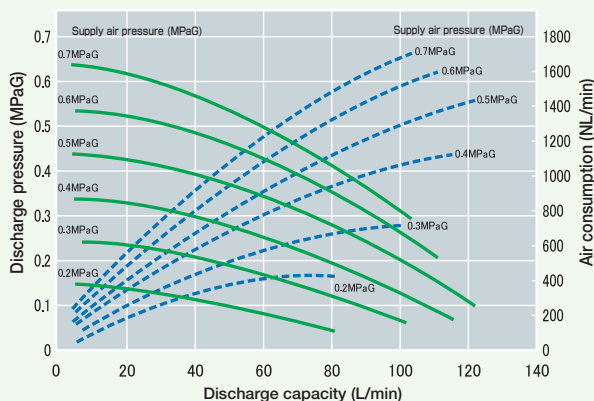
*2) The reference value of the pump size(cast metal size) is designed under the JIS standard tolerance.

Performance Curves for PK-100H

HQ PERFORMANCE —
AIR CONSUMPTION - - -

TEMP : 25°C

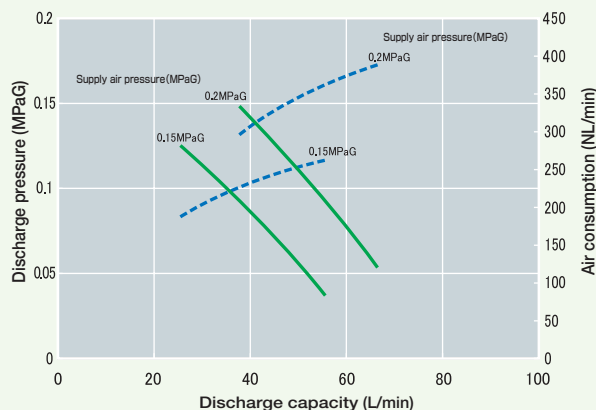
PIPING SIZE FOR AIR : $\phi 19 \times \phi 15.8$ PIPING SIZE FOR FLUID : IN $\phi 31.8 \times \phi 28.0$ OUT $\phi 31.8 \times \phi 28.0$ FLUID : PURE WATER



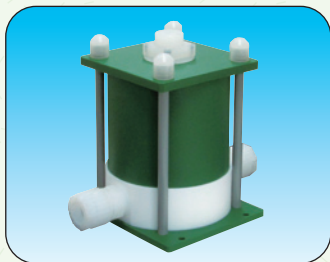
* NL/min = L/min (Normal)

TEMP : 180°C

PIPING SIZE FOR AIR : $\phi 19 \times \phi 15.8$ PIPING SIZE FOR FLUID : IN $\phi 31.8 \times \phi 28.0$ OUT $\phi 31.8 \times \phi 28.0$ FLUID : H₂SO₄



AUTO ACCUMULATOR PA SERIES



For more smooth liquid flow, please use this PA series auto accumulator together with PK series bellows pump.

Auto Accumulator Type	PA-100H
Applicable pumps	PK-100H
Accumulator connections (mm)	1-1/4" ($\phi 31.8$)
Accumulator connectors	SUPER 300 TYPE PILLAR FITTING
Pulsation pressure range	Within $\pm 12.5\%$ of the pump discharge pressure when the pressure is over 0.2MPaG. Less than 0.04MPa when pump discharge pressure is under 0.2MPaG.
Air source connection (inch)	Rc 1/4"
Weight (kg)	22.0
Accumulator size (mm)	*1 228 ^L × 265 ^W × 328 ^H

*1) The reference value of the pump size (cast metal size) is designed under the JIS standard tolerance.

NIPPON PILLAR PACKING CO., LTD

Head Office : 11-48, Nonakaminami 2 Chome, Yodogawa-ku, Osaka, 532-0022 Japan.
Tel : 81-(0)6-6305-2821 Fax : 81-(0)6-6302-3300
E-mail : info@pillar.co.jp

Nippon Pillar Corporation of America : 1562, Parkway Loop, Suite2C, Tustin, CA 92780, USA.
Tel : 1-714-258-7741 Fax : 1-714-258-7760
E-mail : sales@nipponpillar.com

Nippon Pillar Singapore Pte, Ltd. : No. 237 Pandan Loop, #03-01 Westech Building, Singapore 128424
Tel : (65)6861-7138 Fax : (65)6862-9098
E-mail : npillars@singnet.com.sg

Taiwan Pillar Industry Co.,Ltd. : 8F., No.45, SEC.1, MINQUAN E. RD., ZHONGSHAN DIST., TAIPEI CITY., 10452, TAIWAN.
Tel : TAIPEI(886) 2-2587-1911 Fax : TAIPEI(886) 2-2585-3131
URL:http://www.taiwanpillar.com.tw/ E-mail: sales@taiwanpillar.com.tw

Shanghai Pillar Trading Co.,Ltd. : Far East International Plaza A-1111, No.319, Xianxia Road, Changning District, Shanghai China. (200051)
Tel : CHINA(86) 21-6208-7711 Fax : CHINA(86) 21-6235-0501
URL:http://www.pillar-cn.com/ E-mail: sales@sh.pillar-cn.com

Nippon Pillar Packing Co.,Ltd. India Liaison Office : 111(old no.46),4th Main Road, Gandhi Nagar, Adayar, Chennai 600 020, India
Tel : +91-44-3299-1422

<http://www.pillar.co.jp/> e-mail : info@pillar.co.jp

*Specifications and dimensions are subject to change without prior notice.

*The data on this catalogue are solely for your reference and are not to be construed as constituting a warranty.



• Follow the instructions, before installation and operation, for your safety.